

Radix-1: Madonna 16 Aug 1958 AD Sat 7 00 00

Radix-1

Madonna

		MC	2 33 "	☉	23 07 •	12
Date:	16 Aug 1958 AD Sat	ASC	7 17 —	,	11 29 —	1
Time:	7 00 00	—	Plac —	f	5 39 —	R 12
Zone:	5 00 W	11.	7 49 "	"	0 33 •	11
Latitude:	43 35 N	12.	9 53 •	...	15 24 '	9
Longitude:	83 53 W	2.	0 25 —	†	26 24 —	2
City:	Bay City	3.	28 56 —	‡	19 08 ™	R 4
				^	12 42 •	12
		<	25 20 — R 2	‰	2 18 ~	3
		⌘	25 40 — 1	♀	1 43 —	12
				♂	19 59 >	R 6

Madonna

16 Aug 1958 AD Sat 7 00 00 5 00 W 43 35 N 83 53 W

*Personal Interpretation Profile*

*The Ascendant*

The ascendant is the sign that was rising over the horizon at the time of birth. More than any other chart factor, the sign of the ascendant to be accurate is dependant on both time (it changes by 15 degrees every hour) and place of birth (someone born at the same time on the opposite side of the world will have the opposite sign on the ascendant or 'rising'). As such, it is the sign that brings us into physical incarnation, and the planet that rules that sign is said to be the ruler of the chart, or our planetary ruler for this lifetime. Hence the sign and house position of the ascendant's ruler are of particular importance. The ascending sign shows the way in which we approach life and the world in general. It can be related to what some psychologists call the persona, the mask we place between our inner selves and the world. As such it shows the way in which we are perceived by others, at least their first impressions of us. The ascendant represents the manner in which we must express ourselves in order to feel secure, and also the filter through which we perceive life and its challenges. It is the cusp of the first house, the house associated with our personal identity and self expression and represents the kind of energy and types of activities that we need to enliven us physically.

*\*Virgo Ascendant*

With the Mutable Earth sign of Virgo rising at the time of your birth, you approach life with a need to analyse your experiences in order to digest and assimilate them. You have an excellent critical faculty that is sometimes expressed as fussiness and too much attention to detail. You have a sympathetic nature, spontaneous and helpful, you like to be of service to others when you can, but you can be somewhat over-critical when others do not live up to your perfectionist standards. Cleanliness and the care of the physical body are important to you, but if there are difficult aspects to the ascendant, you may go to the opposite extreme.

Virgo is ruled by the planet Mercury, as the ruler of your ascendant this planet will be of particular importance in your chart.

*\* Ascendant Conjunct Moon*

The Moon and your Ascendant in conjunction at the time of your birth indicates that you present a changing face to the world, sometimes understanding and sensitive, sometimes moody and irritable. You are acutely aware of what others are feeling and respond instinctively to their moods, leaving you unsure at times about your own true feelings. You like to project a nurturing image, to make others feel secure and protect them emotionally from the world. Family and friends will come to you when they are in need of such support, and this in turn helps you feel needed and secure, but take care not to force it when it is not required and make people feel smothered.

*\* Ascendant Conjunct Mercury*

The conjunction between Mercury and Ascendant shows that you have a lively intellect, and you are interested in any piece of information that comes your way. You have a desire to learn as much as you can about the world, but you may have difficulty in being objective about what you learn, selecting only the information that is personally useful to you, or that fits in with your way of perceiving things.

You are not afraid to express your opinions, but you will need to be tolerant of other people's opinions which may be just as valid from their own point of view.

\* *Ascendant Conjunct Pluto*

The conjunction between Pluto and your Ascendant indicates that you possess in inner strength that will see you through many life crises. Much of what you think and feel is hidden beneath a seemingly implacable surface, you certainly do not wear your heart on your sleeve, you need to feel complete trust for someone before you reveal your true self to them. You may try to get what you want by using your intense emotions to covertly manipulate others, on the other hand, the same intense emotional nature may attract powerful individuals who attempt to manipulate you.

You tend to regard the world as a place where powerful forces operate that can take over or influence your life negatively, and you shrink from confronting these forces directly. At some point in your life however, events will force you to re-evaluate yourself, your goals and what you want out of life. This process will eventually force you to grow into a stronger more confident individual.

*The Sun*

In the solar system the Sun is the centre around which all the other planets revolve, bound by its gravitational force. Similarly, in the birth chart the Sun represents the "centre" of our personality, or the core of our being, around which all the other psychological drives and needs, symbolised by the planets, revolve.

Just as, in the solar system, the Sun is the source of light and life generating energy, so the Sun represents the source of consciousness and life within us all. It is our will to be and our sense of individuality. The birth chart, however, represents the solar system as seen from the earth, not the Sun. Most of us are not centred in our Sun, but in our earthbound, or sense-bound ego. For most of us then, the Sun represents our "Higher Self" or Spirit. It is the immortal spark of the universal spirit which is uniquely ourselves, as opposed to our transient and mortal ego centred personality. The Sun is therefore what we are striving to become.

The sign position of and aspects to the Sun, as seen from the earth, show how this radiant inner self works through the medium of our ego centred personality. It is the fundamental tone of our being, and as such is the most important placement in the chart.

\* *Sun In Leo*

The Sun in the fixed fire sign of Leo in your chart indicates that your basic nature is proud and generous, with a love of the theatrical and dramatic gestures. You have an innate loyalty and warmth and are generous and affectionate to those you love. You have a need to express yourself creatively, and to be recognised for yourself. The fixed nature of Leo gives you the strength and determination to achieve your aims, once you have decided what they are. Your will power is generally strong, and once you have set your mind on a course of action you can carry it out with great enthusiasm. You will need to beware of a tendency to become fixed and dogmatic in your opinions, and may be rather intolerant of other people's faults and shortcomings. This arises from your intolerance of your own faults and shortcomings. You may refuse to recognise them, or if you do, refuse to live with them. Expecting perfection of yourself leads you to expect perfection in others.

*\* Sun In 12th House*

With the Sun in the 12th house you're aware that your conscious self is only part of your total being, and that below the surface lie a more spiritual dimension. You're very sensitive to the atmosphere and feelings that surround you, and this may manifest as some form of psychic ability. You would certainly benefit from some form of meditation that allows you to get in touch with the deeper levels of your mind.

*\* Sun Square Mars*

With the Sun in a negative aspect to Mars in your chart, this indicates that you have a great deal of energy and drive and can work hard for long periods. However, when things don't happen to go your way, you can over-react and occasionally take your frustration out on friends, family and colleagues.

You're also impatient with any kind of restriction on your freedom, liking to do what you want when you want. But without the occasional compromise, this could inevitably cause conflicts.

Having said all this, this aspect also gives a tremendous drive to succeed in whatever it is you have set your heart on, and a tireless energy that will eventually get you to your goal.

*\* Sun Sextile Jupiter*

The sextile between the Sun and Jupiter gives you a sense of optimism and faith in life that will tend to offset any pessimistic or depressive influences in your chart. No matter how difficult things may seem on the surface, you always feel that you'll pull through in the end.

You'll need to find some form of philosophy or religious system that will help you to understand the meaning of your experiences. You have a desire to learn as much as you can about the world and to expand your horizons through the accumulation of knowledge.

*\* Sun Trine Saturn*

The Sun in trine to Saturn indicates that you're able to work towards your goals with persistence, determination and self-discipline. You have ambition, but you don't feel the need to step on others in order to succeed. Because of this, others will be prepared to help you on your way because they won't feel threatened. You're able to handle responsibility and turn difficult situations into creative opportunities.

*Moon*

In the birth chart, the Moon is second in importance only to the Sun. Unlike the other planets the Moon orbits the earth, and seen from the earth is the same size as the Sun (hence the possibility of total eclipses). The Moon gives off no light of its own, however, but reflects and polarises the light of the Sun.

The Moon represents memories, feelings and instinctive responses that lie just below the level of consciousness. As the Moon orbits the earth, it generates the movements of the tides and governs other natural cycles, such as the menstrual cycle in women. The Moon therefore symbolises the ebb and flow of feeling and emotion (symbolised by water in Astrology), and the feminine principle in nature and in

the individual.

The sign position of and aspects to the Moon show how we react instinctively, and what we need to feel comfortable and secure. As children the Moon is the Mother, or at least how we experienced our mother. As we grow older this extends to our relationships with women in general (particularly for men), and our instinctive or conditioned responses to the world in general; based on the often unconscious memories of this early nurturing experience (or lack of it).

\* *Moon in Virgo*

With the Moon in the mutable earth sign of Virgo in your chart, you have an instinctive need to be of service to others in some way, not in the sense of being a servant, you simply feel comfortable with yourself if you can be of help to others. You will have a fine sense of discrimination and a strong analytical ability, that is, you have a natural ability to separate a problem or situation into its component parts, and perceive the relationships between these parts. It is in this way that you can be of help to others. There may be a tendency to worry too much, or to be over critical if others do not come up to your perfectionist standards. You are a naturally tidy person, but this can be taken to extremes. In your domestic and emotional life, you may be rather conventional, probably as a result of your childhood experience of your mother.

\* *Moon in 1st House*

With the Moon in the 1st House, you'll generally be seen as kind and sympathetic, the kind of person to whom people can turn to pour out their problems. You'll also be very sensitive to the atmospheres around you, but at times with your naturally receptive nature you may have difficulty in separating your own moods and emotions from those you have picked up from your surroundings.

\* *Moon Conjunct Mercury*

The conjunction between the Moon and Mercury indicates that you have a strong imagination. You are able to absorb information quickly and therefore learning comes fairly easy to you.

However, at times, your emotions may at times overrule your common sense, clouding your thinking and making it difficult for you to rationalise and think clearly. At other times you may think too heavily about what should simply be experienced as an emotion. Try to achieve a balance between the two, the best thing to do is to go with the flow, .go with how you feel.

The main disadvantage with this aspect is your sensitivity, as you can easily be hurt not just by what is said, but also by what you feel is being left unsaid.

\* *Moon Trine Mars*

With the Moon and Mars in a trine aspect you are generally tolerant of other people's short-comings. You are also able to keep going even through periods of emotional upheaval, as the relentless energy of Mars should provide an emotional strength and a determination to see things through.

This same quality enables you to give emotional support to friends when they are going through difficult times, and you may find yourself being sought out for the understanding and strength that you have developed as a result of dealing with your own difficulties in the past.

### *\*Moon Square Saturn*

With the square between the Moon and Saturn, you may occasionally have a tendency to place duty and responsibility before your emotional needs. It may be that in your childhood not enough attention was given to your emotional needs, leaving you feeling that they are unimportant, or that they should be sacrificed to more practical concerns.

Perhaps you experienced your parents as being very judgmental or detached, or perhaps one or both of them was not there at all. As you grow older you will learn to make your own judgements on yourself, and not take the opinions of others too much to heart. It is therefore important that you find some way of expressing yourself emotionally, and learn to listen to your heart as well as your head.

### *Mercury*

Mercury is the closest planet to the Sun. Along with Venus it is one of the inferior planets, that is, its orbit lies within the earth's orbit.

In mythology, Mercury is the messenger of the gods. In the birth chart, Mercury represents the urge to communicate with and exchange information with others. In the mind, it represents our rational thought processes, or the ability to analyse and reach logical conclusions. In the body, it is the nervous system, which co-ordinates and unifies all the different bodily functions into an organised whole. Mercury can be said to represent electricity in the form of information. Mercury therefore rules all forms of communication and exchange of information, and the ability to organise facts into a consistent view of the world.

The sign position of and aspects to Mercury in the chart show how one thinks and communicates, that is, the way in which our thoughts are expressed, and the way in which we receive such information from the world around us.

### *\* Mercury in Virgo*

With Mercury in the mutable earth sign of Virgo, you have a practical and analytical mind. You are able to analyse any issue or idea, reducing it to its component parts and seeing how all the parts fit together. This gives you an excellent organising ability and an incisive intellect which, given time, can find the solution to any problem. This ability applies more to practical and material matters rather than abstract and theoretical problems. You have a strong critical ability, able to see the flaws and errors of logic in an opponents arguments. You can, however be over-critical, and impatient with any one whose thinking and ideas are more intuitively or emotionally oriented. Your nerves are highly strung, and you will probably need to consciously practice some form of relaxation to prevent this taking its toll on your body.

### *\* Mercury in 12th House*

Mercury, the planet of the rational mind, is in the 12th House of the unconscious. With Mercury here you may occasionally find that you're influenced by irrational or disturbing thoughts rising up from the depths of your mind, resulting in panic attacks, or the feeling that you are not always in control. However, whilst the unconscious is the dumping ground for experiences we would rather forget, and

feelings we would rather not admit to, it can also be the source of creative imagination and inspiration.

With this placing you'll need to find some way of exploring your unconscious, through meditation or psychotherapy. In this way you can bring to the surface the memories of unpleasant experiences so that they can be examined and dealt with. Clearing away accumulated psychic or emotional rubbish in this way will help you to gain control of your own thought processes, and enable you to make creative use of your psychic sensitivity and powerful imagination.

#### \* *Mercury Sextile Neptune*

The sextile between Mercury and Neptune indicates that you have a sensitive and intuitive mind, often sensing and seeing things that others may miss. You have a strong imagination, with thoughts that can be inspired, but you don't generally waste time in daydreaming, as the ideas that come to you have to stand the test of reason. You're idealistic, but not unrealistic.

You need to plan some kind of goal to follow, and possibly get into higher education, in order to make the most of your imagination and understanding, for whilst aspects between Mercury and Neptune opens the mind to limitless possibilities, some formal training or discipline is needed to make the most of their beneficial influence.

#### \* *Mercury Conjunct Pluto*

The conjunction between Mercury and Pluto gives your mind a deep, intense and penetrating quality that would suit you for any kind of investigative work, or work that requires concentration and attention to detail. Not satisfied with the obvious or superficial, you try to understand the deeper meaning to any subject or issue that you're studying.

You also have strong beliefs, and when you have made up your mind on something you have a conviction and power that others will find difficult to challenge, even if they feel you're wrong.

You may have to learn to rise above deep feelings of anger or resentment towards those who have crossed you or oppose your ideas. Instead of seeking revenge, why not channel this strong desire to hit back into more positive ends.

### *Venus*

Venus, like Mercury, lies within the orbit of the earth. If Mercury can be likened to electricity in the form of information, then Venus can be likened to the magnetic field generated by the electric current. One of the meanings of Venus is therefore "personal magnetism".

In mythology Venus is the goddess of love. In the birth chart, Venus represents the social and love urge, and the need for harmony and exchange of feelings and affection with others. Venus is our need to form relationships and our power to attract such relationships. It is also our sense of values, based on what attracts or repels us.

The sign position of any aspect to Venus shows how we express these needs to others and the kind of response we need in order to feel in harmony. If Venus is adversely aspected these responses may not always be what we consciously desire but are often necessary in order to force us to recognise some unexpressed part of ourselves.



*\* Venus in Leo*

Venus in the fixed fire sign of Leo shows that you need to feel a sense of pride in yourself and in those closest to you. The worst thing anyone can do to you is to hurt that pride, you will find it very difficult to forgive anyone who does. You do not like to beat around the bush, you are straight in your dealings with others and you expect them to be the same with you. In your close relationships you have a desire to be the one in control, to assert your own will and get your own way, take care that this does not turn into a tendency to dominate. You have a deep need to be recognised as a creative and self assured individual.

*\* Venus in 11th House*

Venus in the 11th House of your chart indicates that you enjoy being surrounded by friends and loved ones. This placing gives you a sense of ease and charm in social gatherings. Many of your friendships and relationships will be formed as the result of being part of a group or organisation through which you can share your mutual interests. For you, a meaningful relationship must be based on mutual respect and genuine friendship, in which the two of you help each other to grow and become more than you already are.

*\* Venus Square Jupiter*

With the square between Venus and Jupiter, you may at times give in to self-indulgence, especially when difficulties give you the excuse to neglect duties and responsibilities. In any case, you don't like to be hemmed in by responsibilities. You'll expect a partner to allow you personal freedom, but you may not be too generous in extending the same rights to them.

*\* Venus Square Neptune*

The square aspect between Venus and Neptune can make you overly idealistic in your approach to relationships. There may also be times when you'll expect your partner to accept you with all your faults, without a word of complaint on their part or any effort to change on yours.

Very few people, except perhaps a saint, can measure up to the high expectations you set for a relationship. When things start to fall apart, you'll probably not even notice that anything's wrong until the whole thing dissolves away before your eyes.

There may also be times when you may find yourself led into actions that you later regret. This is particularly true in financial matters, so you must make sure that all your dealings are open and above board. Although some people seem to be able to get away with murder, anything shady or underhand will almost inevitably work out badly for you.

*Mars*

Mars is the first planet in the series out from the Sun that is outside the orbit of the earth. As the first superior planet, Mars represents energy directed outward from the self into the world. It is the energy to initiate action and the ability to meet challenges and overcome obstacles. In mythology, Mars is the god of war. In the birth chart, Mars is the self assertive and aggressive urge, the sex drive and the need to achieve our desires. Positively, Mars is expressed as courage, initiative, and the will-power to



pursue our goals. Negatively expressed, Mars is impatience, violence and the use of force or threats.

The sign position of and aspects to Mars in the chart show how we assert ourselves and express our desires. Mars is traditionally a masculine planet, and therefore represents the expression of the male ego. In a women's chart, the energy of Mars is often repressed by social and family conditioning, and indicates how she will experience the male ego through the men around her, whether positively or negatively expressed. It is, however, becoming increasingly possible for women to break away from traditional passive roles, and express their own Martian drives, but this is often not completely successful until after the age of about 30.

#### \* *Mars in Taurus*

With Mars in the fixed earth sign of Taurus, your self assertive and aggressive urges are coloured by persistence and determination. A great deal of energy can be directed toward material goals, but there may be a stubborn refusal to change from a course of action even if it is obviously leading to disaster. Your temper may be slow to arouse, but when it is, may be difficult to control, resulting in some unpleasant scenes. Possessiveness and jealousy are qualities that need to be controlled, but if expressed positively this placing can give you the capacity for controlled and steady action towards the achievement of your desires.

#### \* *Mars in 9th House*

With Mars in the 9th House of your chart, you'll put a great deal of energy into travel, study, possibly of a philosophical nature, and fighting for the rights of others. You could therefore achieve success as a teacher, lawyer or writer.

#### \* *Mars Square Uranus*

A square aspect between Mars and Uranus creates a need for freedom and independence to the point where it could cause conflicts with others. This difficult aspect between these two highly charged planets results in a high degree of physical and emotional tension that can lead to irritability and impatience and a dislike of any restrictions being placed on your personal freedom.

In spite of this, you're aware of your responsibilities but at times the conflict between fulfilling your responsibilities and doing your own thing can cause a feeling of frustration and anger that you may end up taking out on those closest to you. Nevertheless, if you can come to terms with these conflicts, you have incredible determination and the energy to accomplish more than most.

The planets up to and including Mars have been concerned with the establishment of ourselves as individuals, and with the satisfaction of our own needs and desires. The planets beyond Mars connect us with a larger order.

### *Jupiter*

As the largest planet in the solar system, Jupiter represents expansion and growth. It is the urge to grow beyond our individual limitations and the need to feel part of a larger order, whether this be a particular religion, philosophy or social system. Jupiter, the king of the gods, is traditionally the bestower of faith, optimism and the ability to expand and prosper. It is the planet that promotes personal growth, gives us confidence in ourselves and trust in a higher power or greater plan.

Negatively, Jupiter can manifest as overconfidence, irresponsibility and the tendency to over-extend ourselves or promise too much.

The sign position of and aspects to Jupiter in the chart show what kinds of experiences and types of activity create an inner faith and optimism, and the sense of being connected to the larger scheme of things.

#### *\* Jupiter in Libra*

With Jupiter in the cardinal air sign of Libra, opportunities will come to you as a result of your need for a wide variety of social contacts and acquaintances. Your judgement is fair and impartial, you are aware of the injustices and prejudices of society and have a strong desire to help those who are oppressed or unfairly treated, or to do something to help make the world a better place. This desire may remain just that, however, since your diplomatic nature and your natural ability to see all sides of any issue may paralyse the urge to action. The same qualities, if you can overcome your indecisiveness, can bring you great success in any field that involves working with or negotiating on behalf of the general public. In relationships, you will seek those that in some way broaden your perspective and experience.

#### *\* Jupiter in 2nd House*

With Jupiter in the 2nd House of your chart you'll enjoy accumulating life's little luxuries. Although the acquisition of money and possessions will not be too much of a problem through your life, it could be a matter of easy come easy go. You're generous and what you earn could be spent just as quickly, so occasionally you'll have to be somewhat discriminating in your generosity and spending.

#### *\* Jupiter Conjunct Neptune*

With Jupiter and Neptune in Conjunction, you have a vision of a world united by love and mutual understanding. You would like to see nations working together in a spirit of co-operation. Some people may regard your philosophy as unrealistic, but nevertheless you're sympathetic to groups and individuals who are working toward this end.

### *Saturn*

Saturn is the last planet in the solar system that can be seen with the naked eye from the earth. As such, together with the fact that it is bounded by a series of rings, Saturn represents the boundaries of the individual.

After the limitless expansion of Jupiter, Saturn in the birth chart represents boundaries and limitations. It is the principle of structure and form. In the body, it is the skeleton, which gives the body its structure, and the skin, which is the boundary to the outside world. In the mind, it is the structure of our ego and our sense of self which we seek to preserve from the impact of changes from within and from the outside world. Saturn gives us the ability to endure setbacks and work with discipline and patience toward well defined aims. It is the need for social approval through some kind of tangible achievement. Whereas Jupiter brings rewards and opportunities through what we might call good luck, Saturn brings rewards and opportunities through hard work, limitation and self discipline.

The sign position of and aspects to Saturn show how we seek to establish ourselves as individuals and

find our place in the social system of which we are a part. Any form or structure, however, when placed in the light of the Sun tends to cast a shadow. The position of Saturn in the chart therefore, shows where we find our "shadow". It is here that we meet with our greatest sense of inadequacy, lack of faith and inhibitions. Saturn shows where we are most fearful, and hence most rigid; but if these fears can be met and overcome it is the source of our greatest strength and a solid foundation from which to meet the world.

#### *\* Saturn in Sagittarius*

Saturn forces us to confront our fears and inadequacies, and develop our own inner strength in whatever area of the chart it is found. In the mutable fire sign of Sagittarius, the issue will be the search for meaning, whether this is sought through travel or wholly within yourself. At some point you will experience disillusion with traditional religious and philosophical opinion, resulting in either a scepticism based on fear and a sense of futility, or a search for deeper and more enduring values. Duties and responsibilities may prevent you from expressing your more exploration and freedom loving urges, forcing you to seek this freedom within yourself, in some esoteric philosophical system, or simply through some activity that allows you greater contact with the world from your own limited situation. Eventually you will realise that you cannot accept another person's philosophy, and that the ultimate authority in this area must come from within yourself. Your urge for exploration and travel is a reflection of this need for inner exploration, and the realisation of this could, paradoxically, remove many of the apparent outer restrictions and obstacles, and bring a greater sense of inner and outer freedom, but it is in the nature of Saturn that you must learn through the experience of delays and frustration first.

#### *\* Saturn in 4th House*

With Saturn in the 4th House of your chart, your early home life may have been experienced as restricting and not very supportive. Perhaps your family was struggling materially as you grew up, or the home environment lacked emotional closeness. This may have been carried through to adulthood, at times leaving you feeling unloved or inadequate in some way.

But your sense of security must be developed from within you. Once developed from within, no one or nothing can ever take it away. It may take a long time to find, but when found, your sense of security will continue to be solid and enduring.

#### *\* Saturn Trine Uranus*

With Saturn Trine Uranus you'll generally be able to strike a balance between the need for freedom and an equally strong need for security. You will earn your freedom, and although you have a healthy respect for material things you will find that as your life goes on you will become increasingly detached from them.

There will be times however, when you'll abandon projects simply because they have become too boring and too normal. Not only do you have the need to be different, but you also the potential. You also have the potential to inspire others with your vision and therefore you would be good at teaching or public speaking.

### *The Outer Planets*

The planets beyond Saturn:- Uranus, Neptune and Pluto, move through the signs so slowly that the sign positions of these planets refer more to the generation of which we are a part, rather than individual characteristics. It is the House position that shows where we will meet with the principles expressed by these planets in our lives. The aspects of these planets to the personal planets indicate our degree of attunement to the principles they represent.

The trans-Saturnian planets cannot be seen without the aid of a telescope. Therefore they represent powerful forces that are beyond conscious control. These planets connect us with forces and levels of reality beyond our experience as individual human beings. They do this by breaking down the boundaries of the ego (symbolised by Saturn), to allow the inflow of higher ideals and goals into our ego-centred minds. This can often mean the total disruption or destruction of our existing lives, goals, or outer and inner structures in order to make this possible.

### *Uranus*

Uranus is the first of the trans-Saturnian planets. It cannot be seen with the naked eye and was discovered in 1781 during the period of the American and French revolutions. Its discovery was made possible by the invention of the telescope, a development that has led to radical changes in our knowledge of the universe and our place in it.

In the birth chart then, Uranus represents the force for revolutionary change, the breaking from tradition, and inventiveness and experimentation. As one of the three planets that cannot be seen with the unaided eye, Uranus represents a force over which we have little or no conscious control. On an individual level, Uranus indicates our degree of independence and demand for personal freedom. If well aspected it gives us originality and an attunement to truth that goes beyond the logic of Mercury. If we refuse to express the energy of Uranus within us, preferring to cling to the traditions and limitations of Saturn, then Uranus may manifest as disruptions and sudden changes in our immediate environment, sometimes disrupting our lives completely and forcing us to make needed changes. If the energy of Uranus is expressed negatively, it can lead to wilfulness, impatience and needless rebellion, the rebel without a cause.

The position of Uranus in the chart shows where we most feel the need for freedom and independence and the need to experiment with new ideas and ways of living. Conversely, it is the area where we can cause the most disruption and needless change.

#### *\* Uranus in 12th House*

Uranus in the 12th House of your chart stimulates the urge to understand yourself and your own unconscious motivations. The unconscious contains many repressed and forgotten experiences, particularly painful experiences as a child tend to be pushed into the unconscious, the energy of these experiences does not go away, but leaks out in other forms. You may find yourself unconsciously setting yourself up in situations where you have to re-live the pain that you have repressed in yourself. Without knowing the real source of these situations, it is all too easy to blame other people. Bringing these buried experiences to consciousness, and fully acknowledging the hurt that you feel, will release a lot of energy that can be consciously directed to more creative ends.

### *Neptune*

After Uranus comes Neptune, the god of the sea. Whereas Uranus is the urge for individual freedom

and independence, Neptune is the urge to escape from our normal sense-bound state of consciousness, and experience our unity with a different level of reality.

In the birth chart, Neptune represents our higher ideals and our attunement to realities that lie beyond that perceived by the senses. It is the realm of dreams and imagination and our sense of being part of a whole which is greater than ourselves, the awareness of a spiritual dimension to existence. Neptune represents the urge to transcend our normal state of consciousness through meditation and mystical experience, music, dreams and flights of the imagination, or through drugs (including alcohol) which afford us a temporary escape from the mundane grind of living. Neptune can be expressed as high ideals, altruism and spiritual values, or as self destructive escapism and evasion of responsibilities. For most of us it is a mixture of both.

The position of Neptune in the chart shows where and how we seek to express these needs, and in what areas of our lives we tend to seek an often impossible ideal.

#### *\* Neptune in 3rd House*

Neptune in the 3rd House indicates that you are in tune with your immediate environment to such an extent that you can pick up on the "vibrations" around you. You often get the feeling that you know what is going on beneath the surface, things that are in the air but are not being spoken about or expressed, and you are usually right. At other times, however, what you feel may be the result of your own confused thinking, or unconscious assumptions, which makes it difficult to always be certain about what you are picking up.

You have high ideals and believe, perhaps, that as the individual is part of some greater whole, you should use your own mind and intellect in the service of some high ideal or spiritual goal.

#### *\* Neptune Sextile Pluto*

This aspect between the two outermost planets first occurred in 1942 and will remain in effect for the next hundred years, although the sign positions of the planets will change, so everyone born during this time will have it in their charts. This contact will therefore affect everyone for the next hundred years and represents changes taking place in the world's collective psyche. The keynote of this entire period will be the complete transformation of our existing scientific, religious and political belief systems.

#### *Pluto*

Pluto is the outermost planet in the solar system and therefore the slowest moving. At certain times however, due to the high eccentricity of its orbit, it comes closer to the earth than Neptune. This is the case at the present time and will be so until the end of the century. At the same time it is passing through Scorpio, the sign that it rules. This is a very critical period in world history, since Pluto represents powerful forces of death and destruction or change and transformation, which are now at their strongest. This can lead to destruction through nuclear war or our pollution and exploitation of our planet. On the other hand it can lead to the death of the present political and economical systems and the birth of new political and economic systems and a transformation in international relations and our relationship to our planet. By the time Pluto leaves Scorpio in 1999 the issue will probably be decided one way or the other.

In the individual birth chart, Pluto represents the urge for power and control either over ourselves or

others. It is the need to penetrate beneath the surface of experience, to reveal hidden motivations and repressed desires. The position of Pluto in the chart indicates our capacity for self-regeneration or rebirth and our attitude towards beginnings and endings and birth and death, either actual or symbolic. Pluto can be expressed as the acceptance of our need for complete transformation in some area of our life, and the courage to face our deepest compulsions and hang-ups. Or, it can be expressed as the wilful manipulation of others, ruthlessness and an infatuation with power.

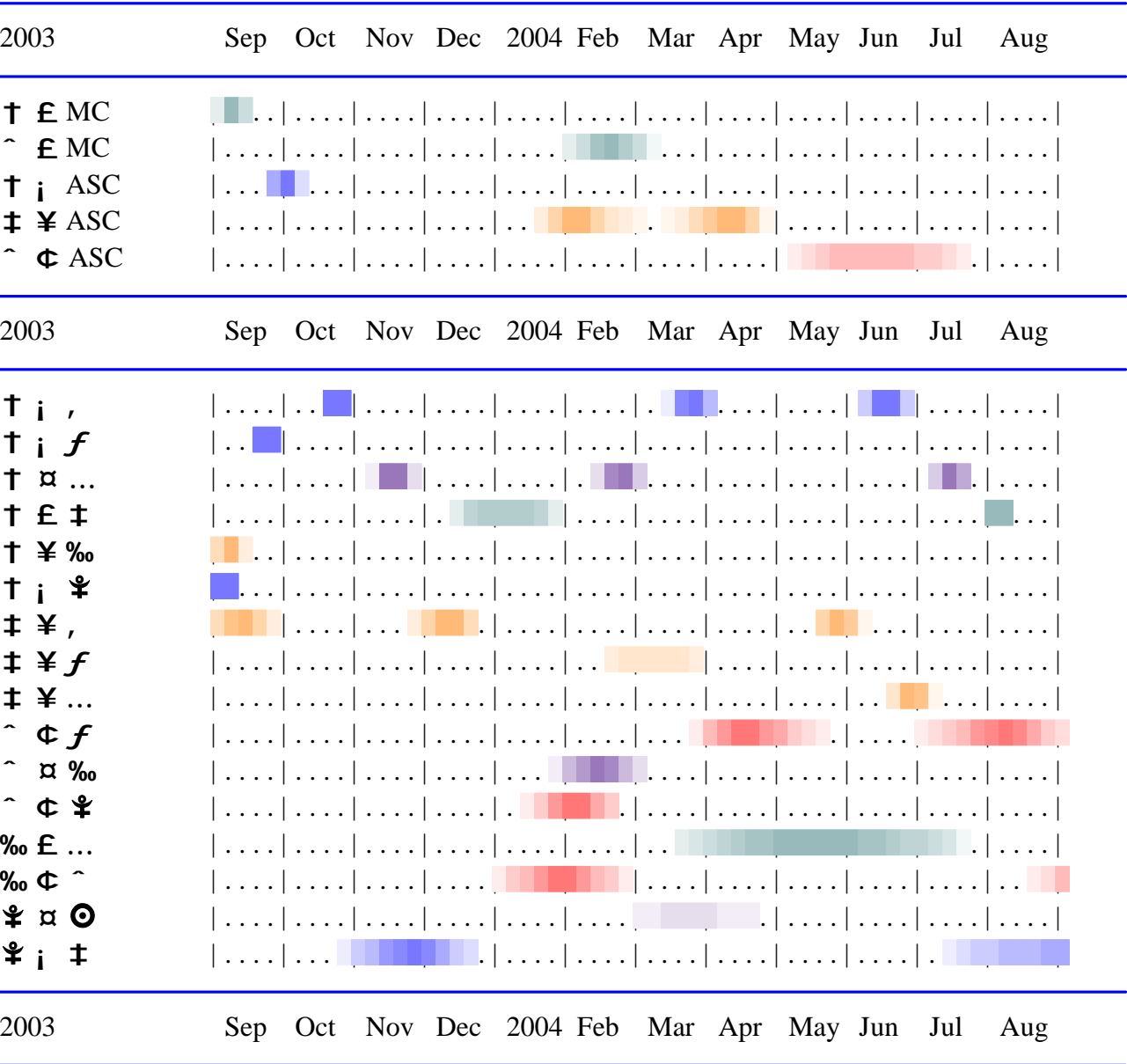
*\* Pluto in 12th House*

The 12th House of the chart represents the experience of feelings and emotions that lie in the unconscious, feelings that challenge the separateness and isolation of the ego. With Pluto in this House you may experience deep drives and compulsions that you do not want to admit to yourself and therefore suppress out of fear. Some of these deeper emotions may indeed be negative, old fears and phobias that may have been inherited or resulted from past experiences, which you need to control. Others, however may be positive urges for some kind of deep seated changes that will bring about personal growth and greater fulfilment. With Pluto here, you will also tend to suppress these positive compulsions out of self doubt and fear of losing the self identity that you have come to consider to be you.

You may have to suffer many painful experiences as a result of suppressing your deeper emotions, but you will find that you can often make something positive out of a crises and that each experience makes you stronger and more aware, and accepting, of the powerful collective and unconscious forces that shape our lives.

Year transits

Madonna: 16 Aug 1958 AD Sat 7 00 00 5 00 W





## Transits for Madonna Sep 2003 to Sep 2004

*Introduction to Forecaster*

There are two types of transits or movement of the planets - long term, and short term daily transits.

The long term transits can effect your birth chart for up to two to three months, and due to astrological cycles, these transits will occasionally recur during the year. The main thing to remember is that these transits represent trends and it is up to the individual to make the best of them. A good guideline is to take advantage of the good periods, and turn the not so good periods to your advantage! For example, if you are aware that you are likely to be argumentative on a particular day, then you may be able to divert your energies and avoid arguments or disputes before they happen. Astrology is not a tool of fate - it doesn't rule your life - it should be used as a guide. Ultimately, it is up to every individual to take control of their lives.

The short term daily transits usually only last a day or two - occasionally up to one week.

There will be times when several long term transits overlap, and may even counteract each other. The best thing to do is to read through the information carefully, and then integrate that information to create a whole picture for the period the transits are in effect.

Please bear in mind that unless the time of birth provided was exact, then it is likely that the exact effect of the transits may be felt either several days before or after the dates given. You will soon be able to regulate the pattern by following the transits carefully.

**From about: 1 Sep 2003 to about: 25 Sep 2003**

**From about: 25 Nov 2003 to about: 20 Dec 2003**

**From about: 20 May 2004 to about: 7 Jun 2004**

*\*Transiting Saturn is Sextile your Natal Moon*

This is a time when you will become much more involved in the daily routine of home life. It is time to take more control of your family life. Just for now, professional responsibilities will need to take a back seat to more pressing personal matters.

Family finances may now be under review - and because of your clarity and precision of thought, this would be an excellent time to plan home financial budgets.

Feeling more self-disciplined, objective and emotionally controlled, this would be a good time to talk any problems or complications through with loved ones. Logical, sensible solutions should now ease long standing domestic tensions.

New friendships may be formed with older individuals or you may have more contact than usual with parents or other older members of your family. Your mother may be of particular help and support to you now. A problematical issue from the past may now be resolved.

**From about: 1 Sep 2003 to about: 7 Sep 2003**

*\*Transiting Jupiter Conjunct Natal Pluto*

This is a time of great determination an almost obsessive determination to succeed in attaining your personal goals and ambitions. You will work harder than ever before to make the very best of any given situation.

This is your chance to be a leader to better yourself - to make the very best of your own creative potential. Many projects will now culminate into a successful dream come true. This is not so much luck as others may see it but the hard earned rewards for all your efforts in the past. Any success achieved now, whether personal or financial, will have been hard fought and well deserved.

A boost to finances may come through legal, tax or insurance matters - but take care not to become obsessed with material possessions and money.

You may now also seek a better understanding of the mystical and religious side of life - seeking to find answers to previously unanswered questions. The metaphysical sciences, in particular, may attract you.

**From about: 1 Sep 2003 to about: 13 Sep 2003**

*\*Transiting Jupiter Sextile your Natal Neptune*

This is a time when very little will anger or irritate you; even if something goes wrong, you will be philosophical and be able to put it into perspective. You may even decide to call a truce with previously held grudges.

Good fortune may also smile upon you perhaps through some legal matter or speculative investment so if a financial bonus does come your way - enjoy it!

Help and support may come from established and respectable sources possibly from older people or from your parents or people in some kind of authority. Legal, insurance and tax matters should also proceed smoothly.

This is a time of learning a time when lessons and knowledge can be absorbed more easily. Life will flow more easily - and much can be accomplished with seemingly very little effort.

But don't just sit back and expect opportunities to just "drop into your lap". You must be prepared to both look for and create new opportunities for yourself.

**From about: 1 Sep 2003 to about: 13 Sep 2003***\*Transiting Jupiter Square your Midheaven*

A sudden surge of confidence, ambition and a desire to achieve something of worth will motivate you to do things and take action that you would only have dreamt of in the past.

Instead of just sitting back and wishing to dreams to come true you will now confidently and boldly stride forward and will start to turn those dreams into reality. Feeling fearless and self-assured, you should now feel capable of overcoming any obstacle placed in your path.

No longer satisfied with ambling along through life you will now start to live as opposed to just existing. Emotions should be heightened feelings will be much more emphasised than usual, especially feelings of love.

Just one word of warning in trying to achieve long term plans and ambitions and constantly looking ahead to the future you may overlook important details which are part of everyday routine. For example, don't forget to pay bills!

Also, in your over-confidence, you could start to feel indestructible and could therefore overwork and push yourself and others around you to the brink of frayed tempers and nervous exhaustion. Don't take others for granted, and don't take on more than you can handle. Also avoid overspending or mounting debts will eventually catch up with you and knock you for six!

**From about: 19 Sep 2003 to about: 25 Sep 2003***\*Transiting Jupiter is Conjunct your Natal Mercury*

This will be a brilliant time to plan for the future because of your increased perception and understanding of all that is happening around you. Feeling an insatiable desire to increase your knowledge, you will learn all that you can with each new day. If questions are asked, then you will need to find the answers. You may even take up some kind of new study or retrain for a different career.

You might try to satisfy this search and need for knowledge through travel - even if it is just a short trip, it will still take you away from your day to day environment. When away from daily routine, lessons can be learned from exciting and unusual experiences.

Pay attention to detail in all financial matters. You are likely to be cramming so much into your mind at the moment, that you may lose sight of the overall picture. However, this could be a beneficial time to buy and sell, especially property but be sure that you are satisfied with all the negotiations before making firm commitments.

Good news is likely to come your way during this transit.

**From about: 25 Sep 2003 to about: 8 Oct 2003**

*\*Transiting Jupiter Conjunct Ascendant*

Greater self confidence and positive thoughts and actions will enable you to accomplish much more than usual during this time. You will be more aware of what is happening around you. Also feeling great you will be looking great!

Plans and projects are likely to proceed smoothly to a satisfactory and lucrative conclusion. Business transactions should therefore be encouraged. Once in a lifetime chances should not be ignored - be they either business or personal.

New friendships will be formed, probably with influential people who can in some way help to raise your standards of living. For example, they may introduce you to new job opportunities, or provide support in business ventures. However, beware an element of arrogance with your newly acquired status. A temporary bout of giddiness at such new previously unexplored heights is understandable - but you must learn to quickly adjust and remember that everyone is equal.

Being quite lucky you may also win competitions around now - so why not fill in all the competition coupons you can find and keep your fingers crossed!

Health should improve, but do beware the tendency to gain weight quickly. Particularly avoid sweet foods, this is not a time to indulge your sweet cravings!

**From about: 20 Oct 2003 to about: 26 Oct 2003**

**From about: 14 Mar 2004 to about: 1 Apr 2004**

**From about: 7 Jun 2004 to about: 25 Jun 2004**

*\*Transiting Jupiter is Conjunct your Natal Moon*

Your home and personal life will now take priority. If you've been considering changing your home then this is the right time to either make the move or set the appropriate wheels in motion. Some of you may even decide to either take up residence abroad or embark on a long journey.

Feeling benevolent, calm and emotionally secure - you are likely to bestow much love, warmth and kindness to close friends, family and, actually, anyone who looks as if they could use a helping hand. This special love and support will be returned to you when you need it most.

Any type of business or financial deals and transactions also look prosperous. Nurture and cultivate contacts who may be able to promote your talents, women especially could help foster future plans.

Surround yourself with loving friends and family. This is a time for mutual nostalgia and reminiscence. Much joy and pleasure will be derived from together reflecting on positive and valuable past memories and how intertwined events have led to the present.

However, take care with dietary habits as weight gain may be possible during this time. An obvious solution is to eat a sensible balanced diet, exercise regularly and avoid over indulgence. Remember, it is always much easier to put weight on than lose those unwanted pounds especially as you become

older!

**From about: 26 Oct 2003 to about: 20 Dec 2003**

**From about: 13 Jul 2004 to about: 31 Aug 2004**

*\*Transiting Pluto Conjunct Natal Saturn*

Unpredictable behaviour may be the catalyst for extreme changes being made in your life during this time. This is a time of endings and new beginnings. You may also be somewhat secretive in your plans and projects. However, too much intrigue could be your undoing.

Think back over the past six months and you will realise that the winds of change have gradually increased in strength - blowing away anything that is no longer of consequence or use to you. For some, the losses may seem painful but in months to come you will emerge a stronger, more mature and more confident individual. It is important not to hold onto the past - but to look and plan for the future a future that you will control not as others want it to be for you.

In business, it is time to wind up projects and deals, which have just been staggering along. It is time to cut your losses and concentrate on new contracts and propositions. The same goes for love affairs and personal relationships. Stable, happy and secure relationships will not be affected by these particular planetary transits, but outworn negative relationships will more than likely disintegrate.

You may also become more involved in religious or political issues during this time.

**From about: 7 Nov 2003 to about: 25 Nov 2003**

**From about: 12 Feb 2004 to about: 2 Mar 2004**

**From about: 7 Jul 2004 to about: 19 Jul 2004**

*\*Transiting Jupiter is Trine your Natal Mars*

During this time, you will put others before yourself and will be seen as self-confident, sympathetic, generous and optimistic. You may devote time and energy to helping those less fortunate than yourself; or simply by having a strong shoulder for a friend in need to lean on. Past grudges should now be forgiven, forgotten and well and truly buried.

This would be an excellent time to start anything new. Feeling restless, adventurous and extremely receptive to new ideas, you will now be looking to do something completely different - and whatever you do start during this time should turn out well. Business deals should be particularly profitable around now.

Freedom and a sense of independence will also be of importance to you so there will be the temptation to break free of any restrictions - be they personal or professional - which are seemingly holding you back and keeping you stuck in a rut.

However, putting other people's needs before your own, you will not be selfish in whatever action you take. If you are going to break free, then it will be done in such a way as to consider other's feelings. In fact, during this time, new exciting and unusual friendships could be formed.

Some pleasant news or a small unexpected windfall may also come your way as a sort of "thank you" for a favour done in the past a favour long forgotten by yourself, but not by the recipient. All good things come to those who truly deserve them!

**From about: 13 Dec 2003 to about: 25 Jan 2004**

**From about: 1 Aug 2004 to about: 7 Aug 2004**

*\*Transiting Jupiter Square your Natal Saturn*

There is a certain amount of tension and confusion in your mind as to what to do next. One minute you could be feeling elated as if you could conquer the world and the next minute plunging into the depths of depression questioning and doubting your own abilities. However, don't reject any changes in your life, no matter how disruptive.

If opportunities do come your way during this period then take them even if you are in one of your "doubting" moods. These opportunities will represent a new chance to break free from outworn inhibiting habits and circumstances.

Don't worry if you feel that you are sometimes taking one step forwards and yet another step backwards this period is all about balanced personal growth for everything you learn something will have to fall by the wayside maybe an outworn idea maybe a mundane job maybe even a stale relationship but whatever you've now cut out of your life, it is because it is no longer needed.

Something hidden from your personal past may now come to light.

Patience will be needed during this time, don't rush plans and ideas. Put temporary brakes on any major financial or business plans whilst there is so much confusion concerning your future. Wait until the dust settles. There may also be some conflict between your personal life and career with one seemingly interfering with the other. Be prepared to compromise and find a balance between these two important areas of your life.

**From about: 1 Jan 2004 to about: 24 Feb 2004**

**From about: 19 Aug 2004 to about: 31 Aug 2004**

*\*Neptune is opposite your Natal Uranus*

Peculiar moods and unpredictable emotions could cause bewilderment, strain and tension. You will now be thrown off balance by unexpected events and changes - and your sense of reality could be dramatically altered. Hidden secrets may now be revealed. Goals, ambition and future plans may suddenly become confused and irrelevant.

Although you will now be drawn to the mystical and religious side of life, avoid foolhardy psychic and psychological experiments and practices - they will only add to the confusion already in your mind as will an excess of drugs or alcohol. Also, this isn't a time to put your trust in people you don't know well as you could become the victim of deceit and dishonesty.

Sometimes this transit brings a time of reckoning - a time to come to terms with your life so far and how well you've integrated the physical and mystical side of life. If one has been ignored for the other - then you still have time to make amends and redress the balance.

Sudden financial difficulties could concern inheritance, insurance or tax matters.

**From about: 13 Jan 2004 to about: 18 Feb 2004**

*\*Transiting Uranus Opposite your Natal Pluto*

Both personal relationships and business partnerships will be subject to change during this time. One of you within the relationship is feeling jumpy and edgy and is either demanding too much control - or going to the other extreme and not pulling their weight. Inevitably this could create arguments and conflicts as the other partner will feel put upon and hard done by. If changes are to be introduced, then they must be done by mutual agreement.

You will be riding an emotional seesaw during this period - up one minute and down the next. Unpredictable, unstable and erratic behaviour could leave you emotionally drawn - one minute you will crave personal independence and the next emotional security. It will be hard to resist the temptation to break away and run for freedom, hoping that problems will work themselves out. There are likely to be changes and disruptions in your home, daily routine and personal life during this period.

Increased frenetic activity and too much pressure to make important decisions instantly could quickly lead to raw and frazzled nerves. Beware "overloading" the system, as increased tension and strain will now be felt more acutely.

**From about: 19 Jan 2004 to about: 2 Mar 2004**

**From about: 14 Mar 2004 to about: 25 Apr 2004**

*\*Transiting Saturn Sextile your Ascendant*

During this time you will possess much common sense and practical ability, with a very serious air about you. Beware however, as there is the danger that you may take yourself just a bit too seriously!

Nevertheless, your ability to communicate and get along with others will be heightened as will your ambitions. In fact, around now, you may find yourself making solid, long term plans for the future. Plans made now could establish a pattern for the next few years of your life. Others will respect and support your points of view and actions because they will recognise your reliability, integrity and sense of responsibility.

New friendships could be formed, possibly with older and more mature individuals. You will rely on these loyal, dependable friends for their truthfulness and excellent advice. You will also now be more willing than usual to working a team effort, rather than go it alone.



**From about: 25 Jan 2004 to about: 2 Mar 2004**

*\*Transiting Uranus Trine your Natal Neptune*

Spiritual and religious matter will be of greater importance than usual. You will now go out of your way to research and find meaningful answers to life's most perplexing questions. Your attitude, goals and ambitions could now dramatically change - with a strong leaning towards a more humanitarian and altruistic outlook.

You will be more prepared to listen to your intuition - taking heed of the important messages being sent by your inner voice. A greater interest may now also be developed in the esoteric sciences, religions and astrology.

Being fair minded in all your judgements, others will now come to you for advice, comfort and support. You may be called upon to act as a mediator and help resolve long standing conflicts.

Willing to help others less fortunate than yourself, you could also become involved in charity or voluntary work. It will not be enough to just give money - you will now want to give of yourself as well.

**From about: 31 Jan 2004 to about: 8 Mar 2004**

*\*Transiting Uranus is Square your Midheaven*

Intense, erratic emotions and peculiar and sudden events may now disrupt your daily routine. Sudden changes of mood and mind are likely.

If you lack confidence and are unhappy with your present lifestyle, then the transit will sow the seeds of doubt in your mind as to whether you want to continue along the path that you are now following. Important personal and business decisions should be postponed until you are less impulsive and more practical in your behaviour.

Freedom and independence will be of utmost importance to you during this period. It is likely that you will rebel against anything or anyone that is holding you back, especially people in authority or older people. For example, because of your own restless and impulsive behaviour, you may have problems with your boss, parents or even the law.

Being rather accident prone during this period, be careful when handling any type of machinery which includes driving a car.

**From about: 18 Feb 2004 to about: 26 Mar 2004**

*\*Transiting Saturn Sextile your Natal Mercury*

If there is any task that needs serious thought, study or concentration, then this is the best time to tackle it. Your concentration span and patience threshold will be much higher than usual. With feet firmly and realistically planted in the ground this will not be a time for chasing dreams and rainbows but it could be a time for turning dreams into reality!

Any job or project that requires you to pay attention to detail as well as evaluate as a whole should now be attended to. In short, this a time for work, which requires mental discipline, organisation and uninterrupted concentration a time for long terms plans. You may now also choose to research or write about a particular subject perhaps something to do with history or events, people or objects linked with antiquity or age. Short journeys are likely.

However, whatever project you choose, do be careful of being too fixed and narrow minded in your outlook. Remember that others may also be able to contribute with valid viewpoints. This lack of flexibility and the result of too much work and no play could leave you stuck in a rut.

Contact with brothers and sisters is likely as is contact with older people or people in authority.

**From about: 2 Mar 2004 to about: 19 Apr 2004**

*\*Transiting Pluto Trine your Natal Sun*

At this point in your life you may be feeling a strong sense of achievement and satisfaction. You should now be reaping the rewards of all your previous hard work, will-power and dedication.

The image that you will project is that of a confident, determined individual who knows what they want from life.

Promotions, pay rises and greater responsibility is likely to come your way. A person in authority has been keeping a close eye on your work recently, and they value what they see. Many people have also been known to start their own businesses under the planetary transits affecting you now. So, you may even give yourself a promotion or pay rise! In any case, finances and cash flow should improve.

Health should improve and feeling energetic you may even take up a new sport or physical regime. Up until now you've just been talking about getting fit now you will actually do something about it. This would also be an excellent time to kick damaging health habits such as smoking, over-eating or over-abusing drugs and alcohol.

**From about: 20 Mar 2004 to about: 19 Jul 2004**

*\*Neptune is Square your Natal Mars*

You may feel that someone is trying to pull the wool over your eyes - and they probably are. The danger is that because of indecisiveness and vagueness in your own actions, you could become susceptible to their scheming and plotting. Someone could be trying to set you up - possibly even forcing you to act against your own will.

Bearing this in mind, it is extremely important that during this period you avoid taking any action which could be considered questionable and shady especially anything illegal.

As vitality could be lower than usual, you are likely to feel lethargic with no energy to spare. This is a good enough reason to lie low for a while keep physical effort to a minimum and rest as much as you can, or you may become prone to infections. Avoid excessive alcohol, un-prescribed drugs or any other chemical stimulants during this time.

Secrecy and deception could be your worst enemies during this time. Perhaps you may become involved in a secret love affair, or some sort of "behind the scenes" deception in your business life. The catalyst for this behaviour is likely to be suppressed and hidden anger, aimed at a particular individual. Conversely, this may be aimed at you.

Don't become too dispirited and downhearted if plans don't go as well as expected. The best thing to do during this transit is to lie low, don't become involved in anything dubious and wait until your physical vitality improves before launching into new projects.

**From about: 26 Mar 2004 to about: 20 May 2004**

**From about: 1 Jul 2004 to about: 31 Aug 2004**

*\*Transiting Uranus is opposite your Natal Mercury*

Constantly on the go, you are now likely to throw yourself into work that requires communication - such as making many telephone calls, writing letters, talking to others etc. However, beware of overloading the system. Increased frenetic activity and too much pressure to make important decisions instantly could quickly lead to raw and frazzled nerves. Increased tension and strain will be felt more acutely.

Unexpected and confusing news is now likely to disrupt your daily routine - you will either receive or be the bearer of such news. This news or communication could have something to do with brothers, sisters or neighbours.

Also, if travelling, don't expect a relaxing trip. Also, take particular care when driving or travelling on public transport.

Don't rely too heavily on others at the moment - no matter what they promise, they are likely to let you down. Brothers, sisters or neighbours may particularly cause problems or you, yourself, may let others down by making promises that you can't keep.

Postpone important financial or business decisions until this transit has passed - wait until your judgement improves.

**From about: 7 May 2004 to about: 19 Jul 2004**

*\*Transiting Uranus is opposite your Ascendant*

Unexpected events in your love life may cause disruption to daily routine - you could suddenly become involved in a whirlwind love affair which could be extremely exciting passionate and electrifying but somewhat short-lived! Emotions will be both unpredictable and unstable. New friendships may be formed, but at the expense of more, long standing associations.

An incredible restless dynamic energy will make you crave for personal freedom and independence during this time. Restrictions in your life simply will not be tolerated and you will rebel against anyone trying to hold you back.

However, in your haste to break free this could prove to be a period of extravagance, self indulgence and empty promises. You could become involved with unreliable people who may temporarily lead you astray or your own restless and impulsive behaviour may disrupt the lives of others. If a personal relationship has become either stale or too demanding either yourself or your partner may now want out.

Considering yourself both invincible and indestructible, you are now likely to place unrealistic expectations on yourself and others. If you promise more than you can deliver then squandered energy could result in disappointment and possibly even total exhaustion. Don't try to achieve too much too quickly.

**From about: 19 Jun 2004 to about: 7 Jul 2004**

*\*Transiting Saturn Sextile your Natal Mars*

During this time you will be able to channel your energy in a constructive, objective and disciplined manner. No task will seem too great and whatever you start now will probably withstand the test of time.

This would therefore be an excellent time to make or pursue long term plans and ambitions, or to begin major projects. This is a time of tremendous professional discipline and organisation.

You will now be capable of extremely hard work, with a concentration and intense energy that will drive you onwards and upwards. You will see each task and project as a challenge one which must be completed at all costs. The exact amount of energy required will be expended on each task - with no time or precious energy wasted.

Career promotion is now likely, as people in authority will recognise the value of your enthusiasm and ability to produce concrete and practical results.

New business opportunities could also now open up to you, presenting new business contracts and

agreement which in time should prove extremely lucrative. This would also be an excellent time to either buy or sell property.

*This concludes Madonna Transit interpretation.*